

GWYNNE VALLEY RURAL ACADEMY

Summary: Public Info Meeting

June 6, 2024

Central Community Hall

8:00pm

Issued June 22, 2024

MAJOR UPDATES

Summary: We are committed to Opening GVRA in September 2024.

New 5-Year Site Plan

We would like to share an updated GVRA 5-Year Site Plan with you to help you understand how much has taken place in recent months. Modular Expansion has been part of our plan since the beginning.

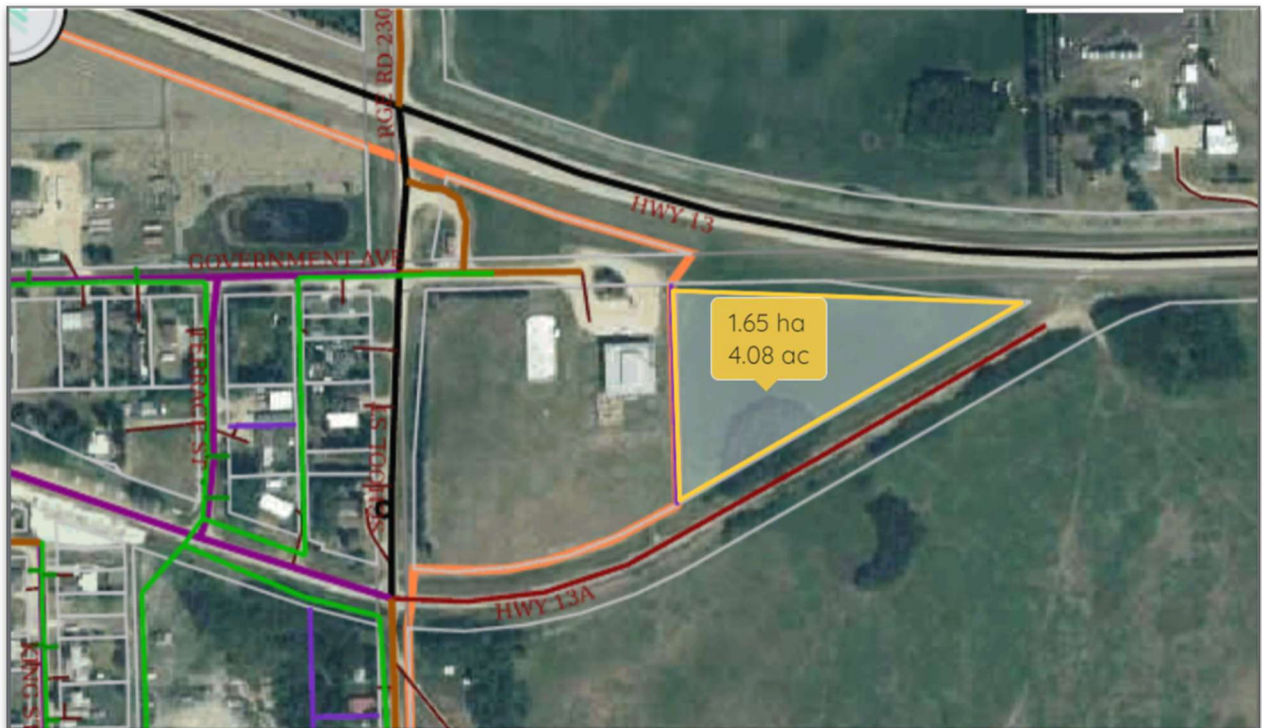
Originally, we were planning modular classrooms for our second year with high school expansion. Our most recent shift in plans it to set up Modular buildings to the east of Gwynne School. Yes – east.

Our philosophy is this:

Concurrent Planning = A Successful Launch

That means we have multiple plans in motion to ensure we always have a path forward.

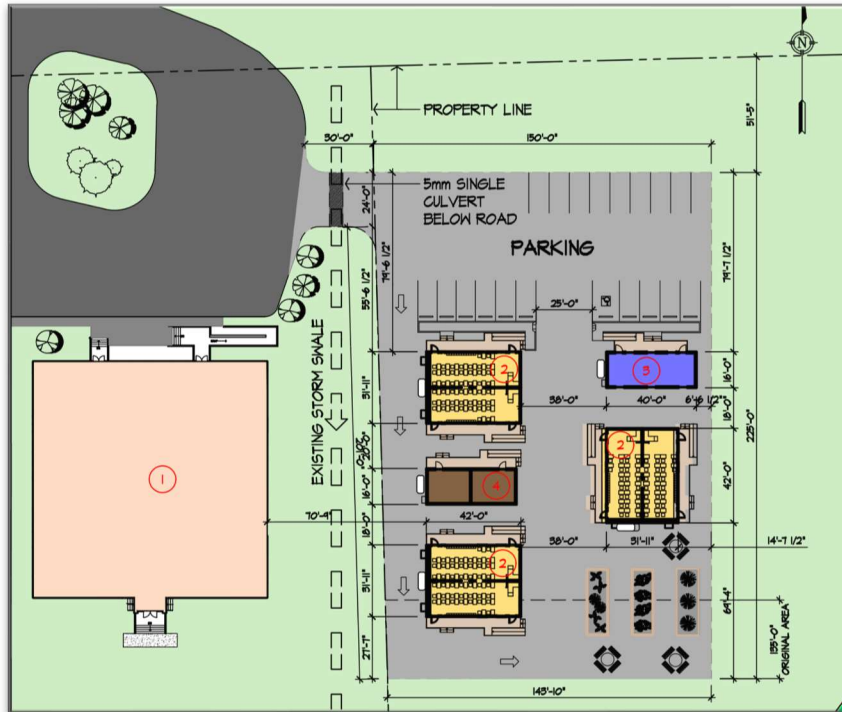
Here's what you're not expecting.



First, local residents Tim and Debbie Rasmuson own the land to the east of Gwynne School, and they are donating over 4 acres of this land to GVRA. This is a total game changer! We are so grateful to them for their generosity, and we're glad to report that rezoning efforts are already taking place with the County of Wetaskiwin.

Second, we are preparing the new site and installing....

Modular Classrooms This Summer



Yes, you read that correctly. We will be adding modular classrooms this summer. The new east land enables us to move forward now.

We said that we were committed to opening GVRA, and this gives us tremendous flexibility, regardless of the challenges that will arise.

We also have a backup plan beyond Modular Classrooms and the Existing Building. More information will be shared at our next public info meeting.

That's our commitment.

Government Support

You may ask "what about the government's support?" We recently received some startup funds from Alberta Education for hiring key personnel. Since having our EVE Charter recognized by the Education Minister last year, this is the first practical commitment we are seeing from the Alberta Government.

Education has also committed grants for furnishing and CTS labs in the near future. That's a BIG deal; and this startup money has nothing to do with the normal funding that will pay our teachers and support staff in the Fall. We also have a school code, we have access to the same online tools that all schools have, and GVREA – this team, is recognized as a school authority.

Existing Building

As previously reported, a team of five went to the Legislature (again) on April 15 to meet with the Education Minister, and we made another formal request for the Gwynne School Building and Land. We have written several times asking the same. While there are signs of activity behind the scene, there is no formal response to date on this request.

Minister Rick Wilson – MLA for Maskwacis-Wetaskiwin, was present at the Public Info Meeting and spoke to the status of the school. Minister Wilson has been a strong advocate for GVRA from the very beginning.

Simply said, there are things we know, and things we can control. There are also things we don't know, and things we can't control. But we believe that Concurrent Planning = A Successful Launch.

Hiring

We're proud to announce that we are formally hiring Dr. Karen Penney as our Superintendent. Dr. Penney's confidence and the expertise already brought the board have both been instrumental in getting us to where we are today. She will have us ready for our inaugural school year. As you may have seen, there's been recent advertising for educator positions at GVRA. We're excited to assemble a team of passionate teachers and staff to make GVRA a smashing success! We look forward to sharing more with you as our team members become officially hired over coming weeks and months. If you're interested in being a part of the team, please watch for upcoming advertisements on our website and social media for hiring opportunities.



Charter Research



We're also pleased to announce that Gwynne Valley Rural Academy will be working with Dr. Clark Banack, PhD from the Alberta Centre for Sustainable Rural Communities to study GVRA's Charter and how we can help other schools and communities thrive in the long term.

The Alberta Centre for Sustainable Rural Communities is based out of Augustana Campus, part of the University of Alberta, so we will have someone fairly local to help GVRA meet its unique requirements.

Summary of Major Updates

1. We are committed to Opening GVRA in September 2024.
2. We will have Portables ready to accept our students on donated land to the East of Gwynne School.
3. We don't know if we'll have access to the existing building in time for opening. But if we do, that's even better for our launch.

Next Steps

Enrolment!

We will be opening an online Application process in the near future to take the next steps similar to how you would enroll at another school. We're doing this online for convenience and accuracy.

We are in the process of setting up tools such as PowerSchool to fully integrate with the government systems we've been given access to. We're looking forward to having these systems up and running very soon. Once GVRA is fully active in government systems for 2024, that Application information will be formalized and students will be enrolled.

Everyone will need to complete an online Application once it opens. If you're wondering what you can do in the meantime, Pre-Registrations are all you need at the time of this newsletter.

While online Application is not simple to implement, we hope to have online Application available to parents and guardians in the near future. There will be regular updates to keep everyone in the loop.

Conventional Life Skills Summary

Attached on the next page is a Listing of 30 areas of focus for Conventional Life Skills – derived from a larger draft document that will be shared with the community once it is beyond the draft stage.

If you haven't done so already, the GVREA is asking for parents and community members to fill out the document and submit it to info@growwithgwynnevalley.ca.

A Note on Pre-Registration

The GVREA has received about 160 Pre-Registrations (and Declarations of Intent) to date. If you're considering enrolling your children, we must emphasize the importance of submitting a Pre-Registration Form sooner than later. The date and order of submission will be a primary factor in determining who will be attending GVRA on Day 1 and who might be on a waiting list. At this time, we anticipate not having to turn anyone away. Pre-Registration Forms can be found at growwithgwynnevalley.ca or on the last page of this document.

Merchandise

GVRA is pleased to offer some great new merchandise including branded jackets, ball caps and mugs. This will be available at our next info meetings and public events. You can help promote GVRA in the community by show these items when you're out and about.



Supporting GVRA

GVRA is now positioned to receive donations and significant support from donors. Consider making a generational impact on this community! Contact us at info@growwithgwynnevalley.ca for more info.

Also, if you know people who would want to support, please put them in touch with us.

Additional Key Facts

What is a Public Charter School?

1. It is still a Public School, and it has same per-student funding
2. Not a Private School
3. Facilitates direct involvement from Parents and Community
4. Alberta Programs of Study (or the Curriculum) is fully integrated into our EVE Charter.

What is EVE?

As a brief refresher or introduction, EVE is our Charter for GVRA, and EVE stands for Early Vocational Exposure. Said simply, "Vocational preparation starts in Kindergarten." We want to integrate students with as many experiences and vocations as possible all the way through their school journey.

There are Four Pillars in EVE:

1. Parental & Community Involvement,
2. Sustainable Living,
3. Conventional Life Skills, and
4. Curriculum & Instruction

*More information about EVE can be found in our February Newsletter on our website:
www.growwithgwynnevalley.ca*

GVRA Basics

- September 2024 Start Date
- GVRA will be open for Grades K–9 in Year One
- We will be adding Grade 10 next year in 2025, then Grades 11 and 12 the following years to round out our full K-12 School.